

SPECIFICATIONS

ALL REFERENCES TO THE STANDARD SPECIFICATIONS ARE TO THE 2019 EDITION OF THE KENTUCKY DEPARTMENT OF HIGHWAYS STANDARD SPECIFICATIONS FOR ROAD AND BRIDGE CONSTRUCTION WITH SUPPLEMENTAL SPECIFICATIONS.

ALL REFERENCES TO THE AASHTO SPECIFICATIONS ARE TO THE LRFD BRIDGE DESIGN SPECIFICATIONS, 9th EDITION.

MATERIALS DESIGN SPECIFICATIONS

FOR CLASS "AA" REINFORCED CONCRETE F'C = 4000 psi
FOR STEEL REINFORCEMENT FY = 60000 psi

REINFORCEMENT

DIMENSIONS SHOWN FROM THE FACE OF CONCRETE TO BARS ARE TO CENTER OF BAR UNLESS OTHERWISE SHOWN. CLEAR DISTANCE TO THE FACE OF CONCRETE IS 2" UNLESS NOTED OTHERWISE. SPACING OF BARS IS FROM CENTER TO CENTER OF BARS.

DRILLING AND ANCHORING INTO EXISTING CONCRETE

FOR ANCHORING NEW REINFORCING STEEL INTO EXISTING CONCRETE, SEE SECTIONS 511 AND 602.03.04 OF THE STANDARD SPECIFICATIONS. AVOID DRILLING THROUGH COLUMN REINFORCEMENT (VERTICAL AND HOOP). IF REINFORCEMENT CAN NOT BE LOCATED PRIOR TO DRILLING AND IS HIT, STOP DRILLING IMMEDIATELY, SHIFT DRILL TEMPLATE LOCATION AND RE-DRILL. THE COST OF THIS WORK, INCLUDING LABOR, TOOLS, AND MATERIALS IS TO BE INCIDENTAL TO THE UNIT BID PRICE FOR STEEL REINFORCEMENT - EPOXY COATED.

BONDING NEW CONCRETE TO EXISTING CONCRETE

IMMEDIATELY PRIOR TO PLACING NEW CLASS "AA" CONCRETE, THE SURFACE AREAS OF EXISTING CONCRETE ARE TO BE COATED WITH A TWO-COMPONENT EPOXY RESIN SYSTEM IN ACCORDANCE WITH SECTIONS 511 AND 826 OF THE STANDARD SPECIFICATIONS. THE COST OF THIS WORK, INCLUDING LABOR, TOOLS, AND MATERIALS IS TO BE INCIDENTAL TO THE UNIT BID PRICE FOR CLASS "AA" CONCRETE.

CONCRETE SEALING

CONTRARY TO THE SPECIFICATIONS, DO NOT APPLY MASONRY COATING. INSTEAD APPLY CONCRETE SEALER IN ACCORDANCE WITH THE SPECIAL NOTE FOR CONCRETE SEALING.

BEVELED EDGES

ALL EXPOSED EDGES SHALL BE BEVELED 3/4" UNLESS OTHERWISE SHOWN.

TRAFFIC CONTROL

THE CONTRACTOR SHALL BE RESPONSIBLE FOR ERECTING AND MAINTAINING PROPER BARRICADES AND ADVANCE WARNING SIGNALS FOR ROAD CONSTRUCTION AND ROAD CLOSURE.

UTILITIES

BEFORE BEGINNING WORK, LOCATE ALL EXISTING UTILITIES. CONSIDER LOCATION OF ANY UTILITIES SHOWN ON THE EXISTING OR CONTRACT DRAWINGS TO BE APPROXIMATE AND FOR INFORMATIONAL PURPOSES ONLY. THE DEPARTMENT DOES NOT WARRANT THE LOCATIONS AND ASSUMES NO RESPONSIBILITY FOR THE ACCURACY OR COMPLETENESS. THE CONTRACTOR MUST MAKE HIS OWN DETERMINATION. EXCEPT AS SHOWN ON THE PLANS, WORK AROUND AND DO NOT DISTURB EXISTING UTILITIES.

REMOVE EXISTING STRUCTURE

THE EXISTING BARRIER IS TO BE REMOVED AS SHOWN IN THE PLANS. THE COST OF THIS WORK SHALL BE INCLUDED IN THE UNIT BID PRICE FOR REMOVE CONCRETE MASONRY.

PLANS OF EXISTING STRUCTURE

AS AN AID TO THE CONTRACTOR, PLANS OF THE EXISTING BRIDGES ARE AVAILABLE (SEE DRAWING NUMBER 14167, 24315, 14168 AND 24314). THE COMPLETENESS AND ACCURACY OF THE DRAWINGS IS NOT GUARANTEED.

VERIFYING FIELD CONDITIONS

THE CONTRACTOR SHALL VERIFY ALL DIMENSIONS BEFORE ORDERING MATERIAL. NEW MATERIAL THAT IS UNSUITABLE BECAUSE OF VARIATIONS IN THE EXISTING STRUCTURE SHALL BE REPLACED AT THE CONTRACTOR'S EXPENSE.

DAMAGE TO THE STRUCTURE

THE CONTRACTOR IS RESPONSIBLE FOR ANY AND ALL DAMAGE TO THE EXISTING STRUCTURE, SHOULD IT BE ALLOWED TO FALL DUE TO THE CONTRACTOR'S ACTIONS. THE CONTRACTOR IS RESPONSIBLE FOR BOTH THE REMOVAL AND REPLACEMENT OF THE FALLEN PORTION AT THE CONTRACTOR'S EXPENSE.

ABBREVIATIONS

CL CENTERLINE EQ EQUAL
CONN CONNECTION SPA SPACE
CLR CLEAR TYP TYPICAL
EF EACH FACE
EMBED EMBEDMENT

ESTIMATE OF QUANTITIES

Table with 4 columns: BID CODE, ITEM, QUANTITY, UNIT. Includes items like REMOVE CONCRETE MASONRY, CONCRETE CLASS AA, STEEL REINFORCEMENT - EPOXY COATED, CONCRETE SEALING, THRIE BEAM GUARDRAIL TRANSITION TL-3.

INDEX OF SHEETS

Table with 2 columns: Sheet No., Description. Includes Sheet S1: GENERAL NOTES & ESTIMATE OF QUANTITIES, S2: KY 70 LAYOUT, S3: CSX RR LAYOUT, S4: THRIE-BEAM RETROFIT DETAILS.

SPECIAL NOTES

Table for SPECIAL NOTES containing text: CONCRETE SEALING.

SPECIAL PROVISIONS

Table for SPECIAL PROVISIONS containing text: NA.

STANDARD DRAWINGS

Table for STANDARD DRAWINGS containing drawing codes like BHS-014, RBR-015-06 and descriptions like THRIE-BEAM GUARDRAIL TRANSITION (TL-3), STEEL GUARDRAIL POST.

SPECIFICATIONS

2019 Standard Specifications for Road and Bridge Construction
2020 (9th Edition) AASHTO LRFD Bridge Design Specifications

Table with REVISION and DATE columns. Includes DESIGN BY, CHECKED BY, DETAILED BY information.

Commonwealth of Kentucky DEPARTMENT OF HIGHWAYS

COUNTY HOPKINS

ROUTE I-69 CROSSING KY 70 & CSX RR

GENERAL NOTES & EST QUANTITIES

Table for GENERAL NOTES & EST QUANTITIES with ITEM NUMBER and QUANTITY columns.

ITEM NUMBER 2-20029



PREPARED BY

SHEET NO.

S1

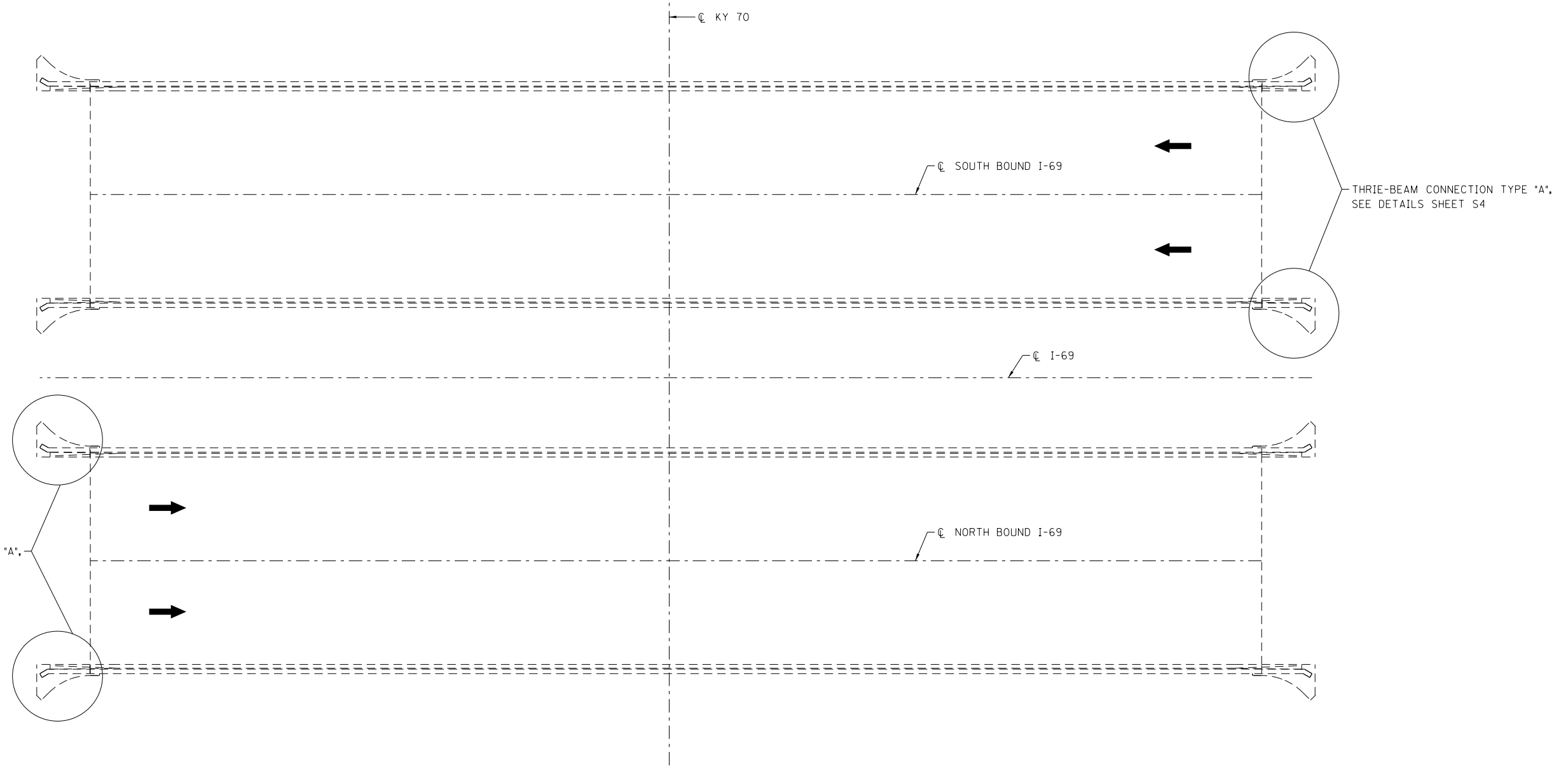
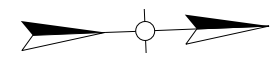
DRAWING NO.

FILE NAME: U:\78579074\STRUCTURAL\STRUCTURE_01\DRAWING\SHEETS\169_OVER_KY70_SHEET_1.DGN

USER: sfoxy
DATE PLOTTED: 6/14/2024 9:32:01 AM

E-SHEET NAME:

MicroStation v8.11.9.916



THRIE-BEAM CONNECTION TYPE *A*,
SEE DETAILS SHEET S4

THRIE-BEAM CONNECTION TYPE *A*,
SEE DETAILS SHEET S4

PLAN

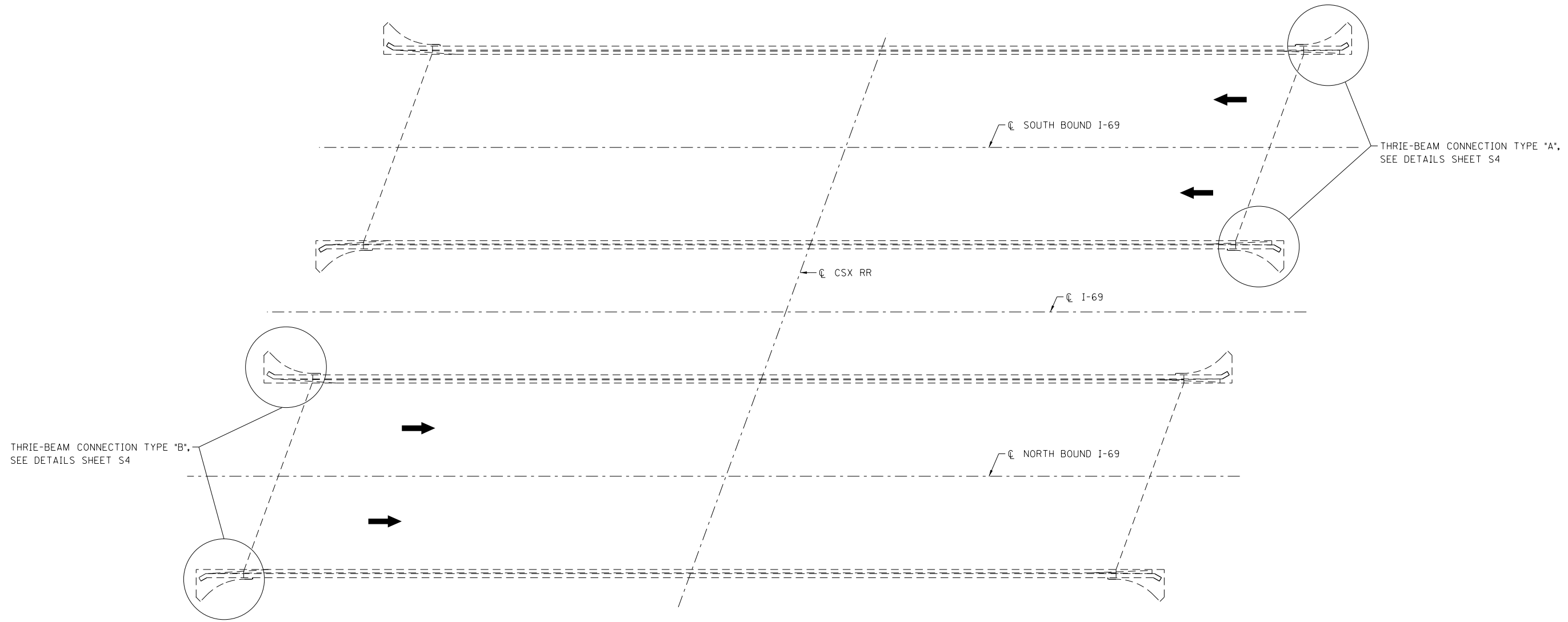
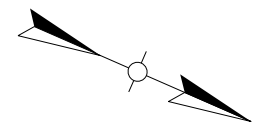
REVISION	
DATE: JUNE 2024	CHECKED BY
DESIGNED BY: C. ELLISON	M. LAWLER
DETAILED BY: S. FOY	C. ELLISON
Commonwealth of Kentucky DEPARTMENT OF HIGHWAYS	
COUNTY HOPKINS	
ROUTE I-69	CROSSING KY 70
KY 70 LAYOUT	

ITEM NUMBER
2-20029

PREPARED BY
 Stantec

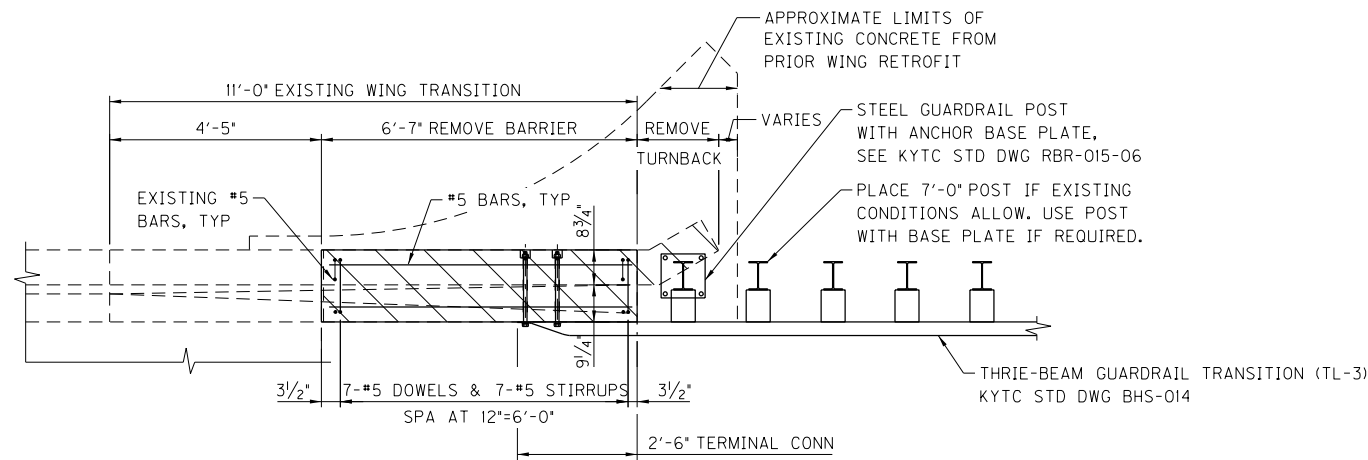
SHEET NO.
S2

DRAWING NO.

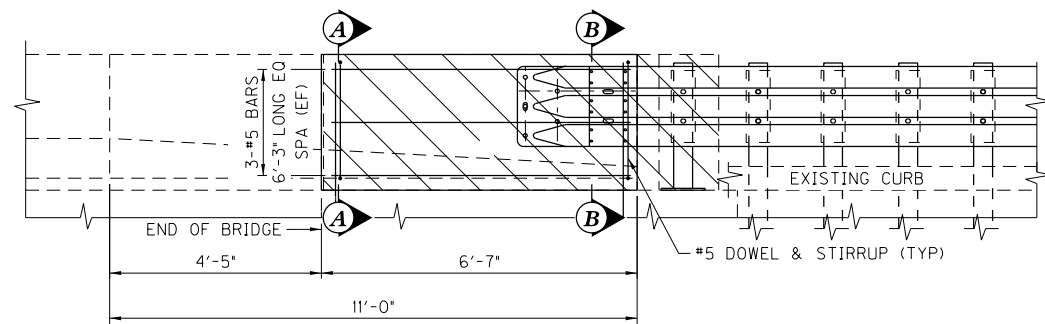


PLAN

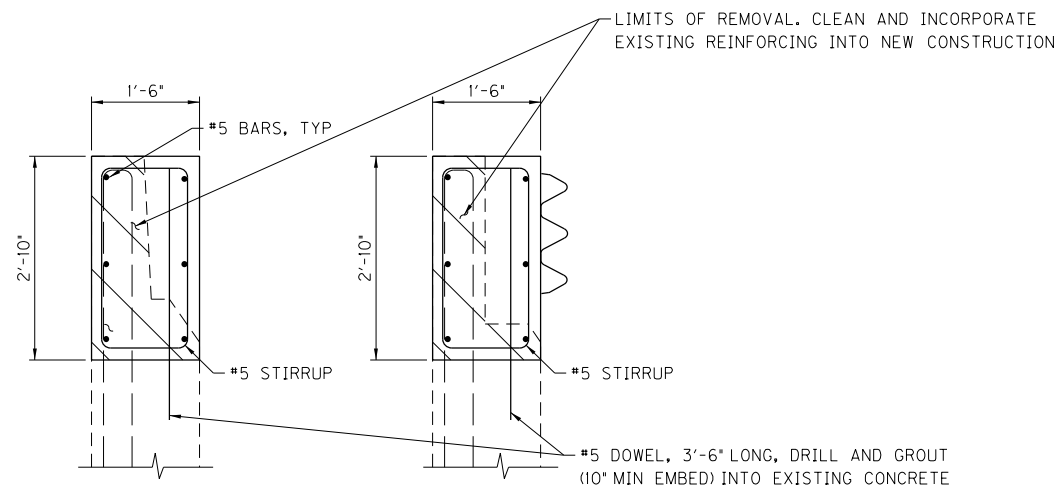
REVISION		DATE
DATE: JUNE 2024	CHECKED BY	
DESIGNED BY: C. ELLISON	M. LAWLER	
DETAILED BY: S. FOY	C. ELLISON	
Commonwealth of Kentucky DEPARTMENT OF HIGHWAYS		
COUNTY HOPKINS		
ROUTE I-69	CROSSING CSX RR	
CSX RR LAYOUT		
ITEM NUMBER	PREPARED BY	SHEET NO.
2-20029	Stantec	S3
		DRAWING NO.



PLAN

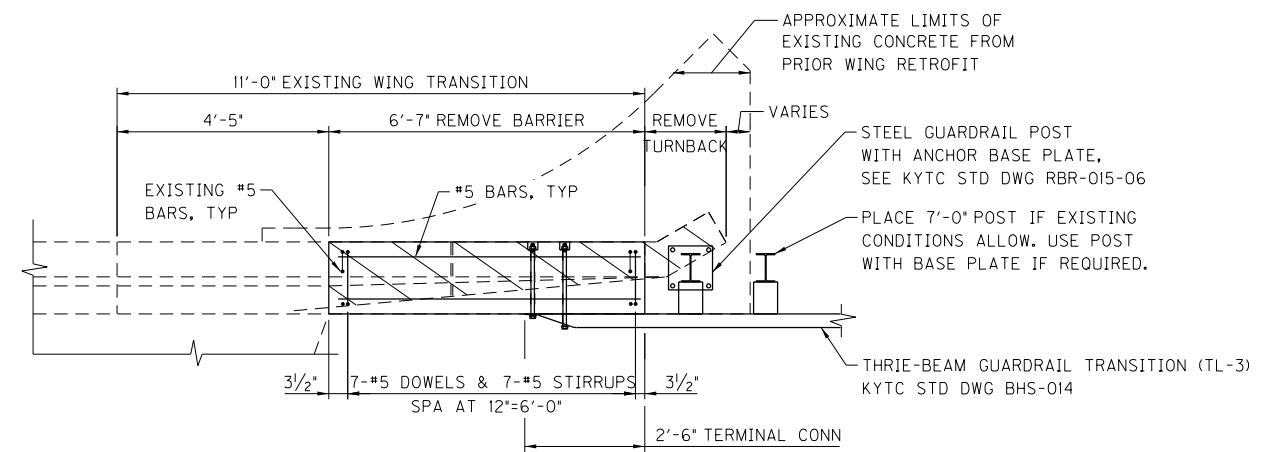


ELEVATION
TYPE A

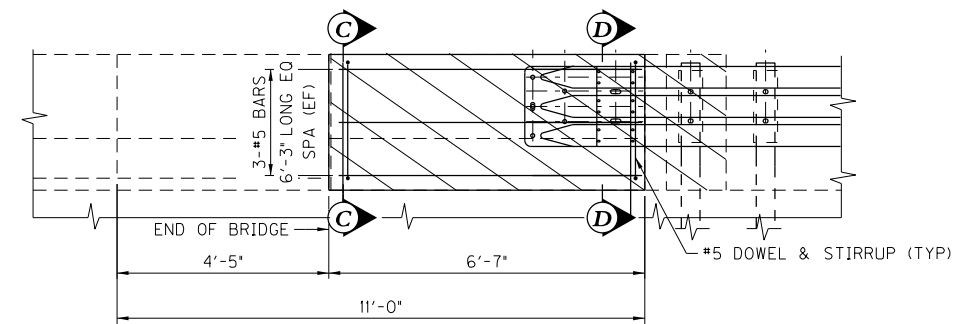


SECTION A-A

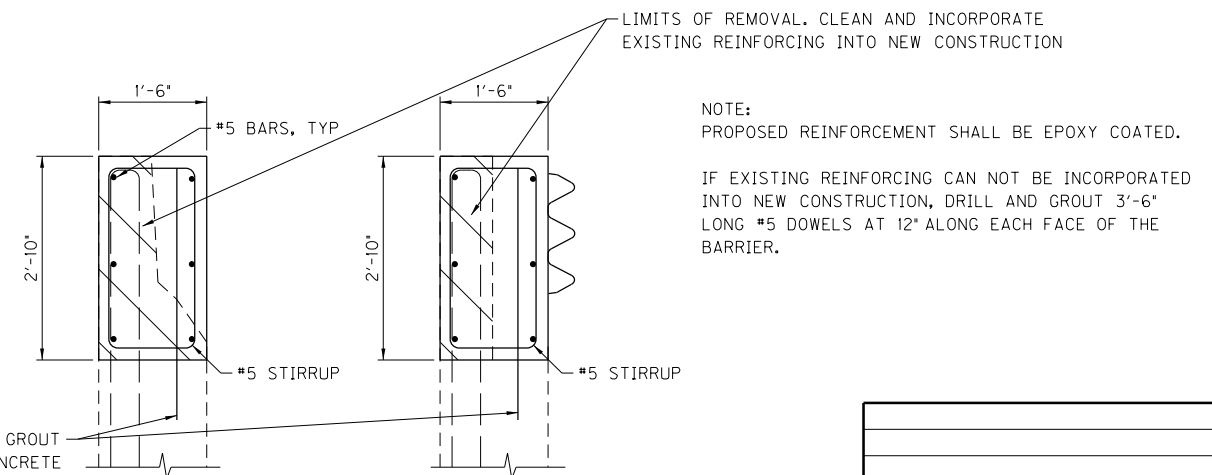
SECTION B-B



PLAN

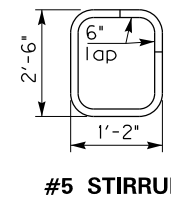


ELEVATION
TYPE B



SECTION C-C

SECTION D-D



ITEM NUMBER	2-20029
-------------	---------

REVISION		DATE
DATE: JUNE 2024	CHECKED BY	
DESIGNED BY: C. ELLISON	M. LAWLER	
DETAILED BY: S. FOY	C. ELLISON	
Commonwealth of Kentucky DEPARTMENT OF HIGHWAYS		
COUNTY HOPKINS		
ROUTE I-69	CROSSING KY 70 & CSX RR	
THRIE-BEAM RETROFIT DETAILS		
PREPARED BY	SHEET NO.	
Stantec	S4	
	DRAWING NO.	